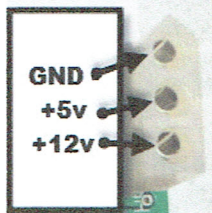




Williams WPC

Voltages



Pin 1: GND
Pin 2: +5v
Pin 3: +12v

Games Supported

Funhouse	Indiana Jones
Harley-Davidson	Judge Dredd
The Machine: Bride of	Star Trek: TNG
Pin*Bot	Popeye Saves The Earth
Gilligan's Island	Demolition Man
Terminator 2	World Cup Soccer
Hurricane	The Flintstones
Party Zone	Corvette
The Addams Family	Red & Ted Road Show
The Getaway: HS II	The Shadow
Black Rose	Dirty Harry
Fish Tales	Theatre of Magic
Doctor Who	No Fear
Creature from the Black	Indianapolis 500
Lagoon	Johnny Mnemonic
White Water	Jack*Bot
Bram Stoker's Dracula	WHO Dunnit
Twilight Zone	

Warning!

Install the power tap with the game power off!

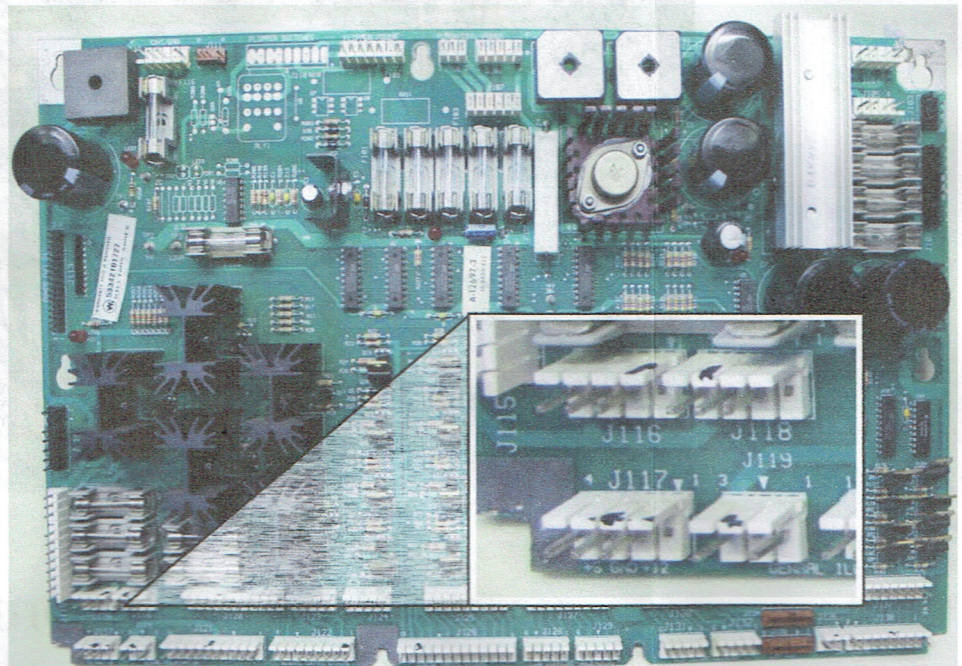
Care should be taken to make certain that wires are connected with no tension placed on the power tap - bent pins or broken solder joints can occur!

It is safest to connect to the mod power connector before plugging the tap into your power supply. Use zip straps to relieve any stress on connections to the power tap.

Installation

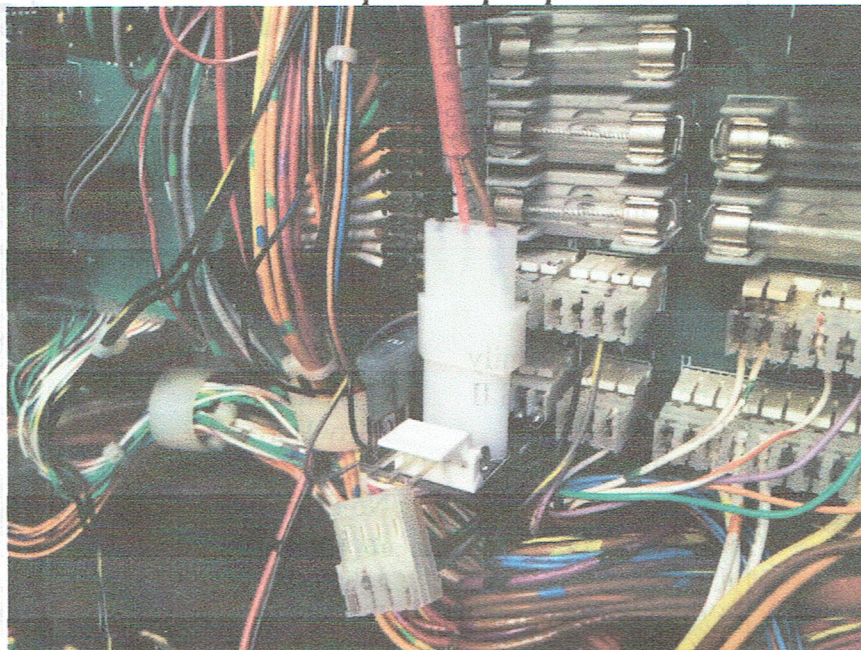
If you are installing the Power Tap in a WPC (not WPC 95) game, you will need to find connector J117 on the power driver board. The power driver board is the large board in the lower left of your WPC back box.

Gripping the plastic connector – not the wires – remove the connector from J117.

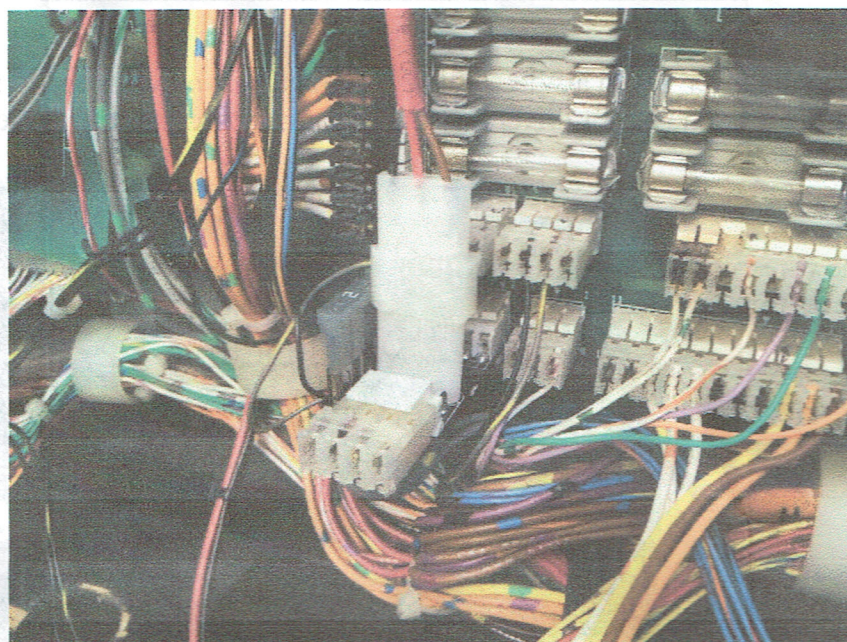


Plug the mod power into the Power Tap before installing the Power Tap. Pressing the mod connector on to the Power Tap once it is installed could result in bent pins or broken solder joints on your power driver board!

Install the WPC power tap as pictured



Then connect the J117 connector to the Power Tap



www.dkpinball.com