

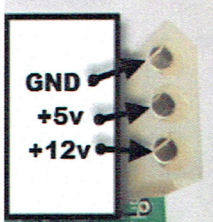
Data East Power Tap

This Tap fits these Power Supply part numbers

[520-5000-00] [520-5047-00]

[520-5047-01] [520-5047-02]

Voltages



Pin 1: GND

Pin 2: +5v

Pin 3: +12v

Laser War
Secret Service
Torpedo Alley
Time Machine
Playboy 35 Anniversary
Monday Night Football
RoboCop
Phantom of the Opera
Back to the Future
The Simpsons
Checkpoint
Teenage Mutant Ninja
Turtles

Batman
Star Trek 25th Anniversary
Hook
Lethal Weapon 3
Star Wars
Rocky & Bullwinkle
Jurassic Park
Last Action Hero
Tales from the Crypt
The Who's Tommy
WWF Royal Rumble
Guns N' Roses

**** Games Not Supported ****

Maverick / Mary Shelly's Frankenstein / Baywatch
Batman forever

Warning!

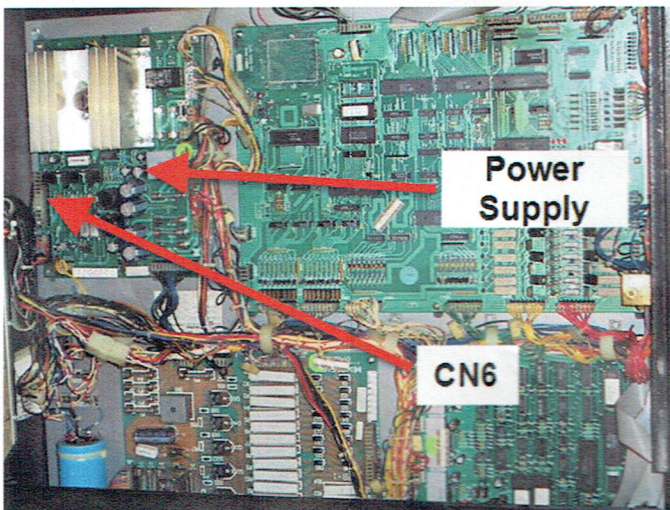
Install the power tap with the game power off!

Care should be taken to make certain that wires are connected with no tension placed on the power tap - bent pins or broken solder joints can occur!

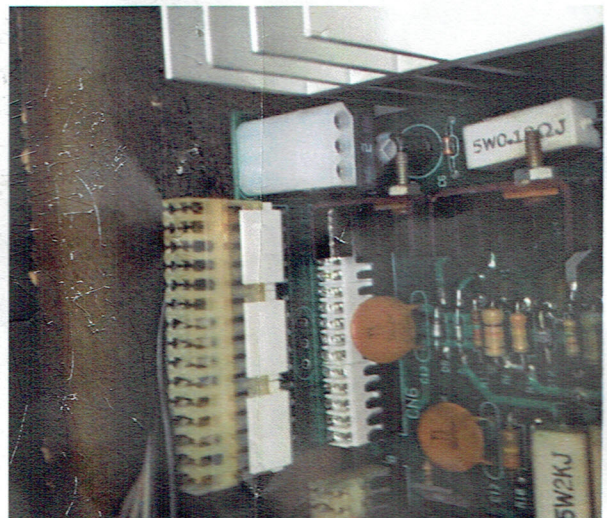
It is safest to connect to the mod power connector before plugging the tap into your power supply. Use zip straps to relieve any stress on connections to the power tap.

Installation Instructions

1. Locate the 15 pin power connector. It is labeled CN6 on the power supply.
2. Remove the 15 pin power connector.
3. Install the Data East Power tap onto the power supply. The connector is keyed so there is only one way to install the power tap. The 12v/5v power connector on the power tap will face into the board, fitting just inside the large heat sink. The connection will be stiff; use steady pressure but DO NOT force the connection!
4. Once the board is installed, verify that you have plugged it in correctly, and then connect the games 15 pin power connector to the 15 connector on the power tap.



Power Supply and CN6 location



Installed Power Tap